



K N K HOTEL SUPPLIES LTD.

香港九龍油塘草園街4號華順工業大廈3樓C室
Blk. C, 3/F., Wah Shun Ind. Bldg.,
4 Cho Yuen Street, Yau Tong, KLN., HK.
Tel: (852) 3549-3619 Fax: (852) 3549-3609
Website: www.knkhs.com.hk Email: info@knkhs.com.hk

**PROFESSIONAL FOOD
PROCESSING MACHINES**

Versatile super slicer/Dicer
萬能超級切片機 (切丁機)

F-2000S / F-2000D

能夠“瞬間·無浪費·高質量”的切出各種食材!
· Process vegetables "Speedy, No waste, Excellent quality" in cutting.

切出食材的最大魅力，創造最新的可能性。
1機3用。只要更換刀具就可以一次完成切片，切絲，切丁。切凍肉凍魚溫度設定必須在-2℃-4℃之間。

Pull out the charm of the foodstuff itself to the fullest, spread the new possibilities.

有比 F-2000S/D 加工量更大的
F-2100S/D 和 F-2200S/W
We also have F-2100S/D and
F-2200S/D for further mass
processing of possible than
F-2000S/D.



Cutting size 切割尺寸

- 切片Slicing: 0.3 ~ 10mm
- 切絲Julienne: 0.7 ~ 10mm
- 切丁Dicing: 1.2 ~ 10mm

※ 不同食材,切割尺寸不同, 詳細請諮詢。
※ Adaptable size there might be different by foodstuffs.
Please contact us for more information.

機器尺寸	W850×L1050×H1380 (mm)
電機	三相380V 1500W+750W帶變頻器
重量	150kg
使用時間	連續
處理能力	每小時110/400kg
外殼	SUS 304不銹鋼材質
安全裝置	利用傳感器感知切斷電路
Dimensions	W850×L1050×H1380(mm)
Electric motor	three-phase 200V 1500W+750W with inverter (Japan specification) / Custom-made available
Weight	150kg
Operating Time	continuous use
Processing capacity	110~400kg/hour
Exterior	SUS304 stainless steel
Safety device	circuit breaks by sensor detection

3roles in one! Sliced,shredded, diced possible by exchange of cutlery.

蔬菜
Vegetables



生薑切片
Sliced ginger pickles



蘿蔔和胡蘿蔔切絲
Mixed garnishes of Japanese radishes and carrots



高菜切粒
Leaf vegetables' dice cut

水果
Fruits



青香蕉切片
Sliced green banana



青木瓜切絲
Thin strips of green papaya

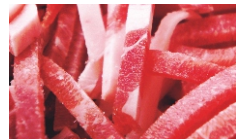


芒果切丁
Diced Mango

凍肉
Meats



凍雞肉切片
Sliced chicken



凍豬肉切絲
Thin strips of pork



凍牛肉切粒
Diced beef

凍魚
Fishes



凍蝦切片
Sliced shrimp



鰹魚切絲
Thin strips of bonito



章魚切丁
Diced octopus

Siraganegi shredder(Snow White Princess)
白髮蔥絲機-白雪公主

DX-88P

提升料理的等級!
For upgrading your dishes!

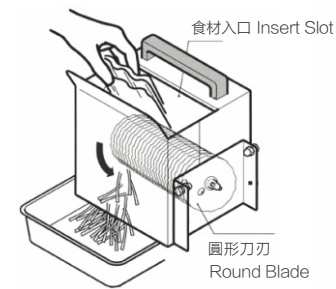
- 除掉白蔥的芯後投入
- 美麗演繹日式和中西式料理中的各種菜單
- 可選擇1.5mm寬、2mm寬、2.5mm寬
- Throw in leeks after removing their cores.
- Various dishes of Japanese,Western and Chinese styles can be dressed beautifully.
- You can choose between 1.5mm,2.0mm and 2.5mm in width.

[用途]:白髮蔥絲

機器尺寸:	W430xL155xH270(mm)
投入口:	W73xL11(mm) 1.5mm 刀具盒 W120xL11(mm) 2.5mm 刀具盒
額定耗電:	220V/100W 50/60Hz
重量:	10.5kg
使用時間:	20分鐘
處理能力:	24根長蔥/5分鐘

[Application]: Siraga-negi(Fine strips of leeks)

Dimensions:	W430 x L155 x H270(mm)
Insertion slot:	W73 x L11 (mm) 1.5mm cutting block W120 x L11 (mm) 2.5mm cutting block
Rated power consumption:	220V/100W 50/60Hz
Weight:	10.5kg
Operating time:	20 minutes
Processing capacity:	24 leeks : 5 minutes



DM-91D 切絲達人 Julienne robo

切絲、切片、切條
Suitable for Thin Strips, Slices, Rectangles cutting.

【用途：切絲、切條、切片】
Applications : Cutting into thin strips, slices, rectangles

- 最大長度是10cm
- 適合於處理量比DX-80更大者
- 豐富的選配件（切絲、切片、切條）
- 順着食材的纖維切割口感好
- Up to 10cm in length.
- Recommended for processing a larger amount than DX-80.
- A wide variety size of cutting options. (Thin strips, Slices, Rectangles)
- Clearly cut along with the fibers of foodstuffs.



寬條 Rectangles cutting



- 附屬品/絲刀盤 ※有各種型號刀盤供選擇
- Accessory/julienne board (Standard size of 3×3mm)
- You may choose the comb blade's width size from below.

<ul style="list-style-type: none"> ■ 機器尺寸: W470×L300×H430(mm) ■ 投入口: W100×L100×H120(mm) ■ 額定耗電: 220V/200W 60Hz ■ 重量: 13kg ■ 使用時間: 30分鐘 ■ 處理能力: 3×3mm的絲 牛蒡30根/5分鐘 蘿蔔6根/5分鐘 胡蘿蔔40根/5分鐘 	<ul style="list-style-type: none"> ■ Dimensions : W470×L300×H430(mm) ■ Insertion Slot : W100×L100×H120(mm) ■ Electricity Power : 220V/200W 60Hz ■ Weight: 13kg ■ Operating Time: 30min ■ Processing Capacity: using 3×3mm julienne board Cut burdock 30pcs/5min Cut Japanese radishes 6pcs/5min Cut carrots 40pcs/5min
--	--

- 選配件
片刀盤: 0.3~2.5mm
片刀盤: 3.0、4.0mm
絲刀盤: 1.0×1.0mm、1.2×1.2mm、1.5×1.5mm、2.0×2.0mm、2.5×2.5mm、3.0×3.0mm、4.0×4.0mm
★訂做也是最大厚度4.0mm。寬度（絲刀的型號）可以自由選擇。
例）寬條: 4×10mm
※更換尺寸型號，必須要更換整個絲刀盤。1個刀盤1個型號
- Options
Slice board: 0.3~2.5mm
Slice board: 3.0mm, 4.0mm
Julienne board: 1.0×1.0mm, 1.2×1.2mm, 1.5×1.5mm, 2.0×2.0mm, 2.5×2.5mm, 3.0×3.0mm, 4.0×4.0mm
Custom-made julienne board also available. Thickness up to 4.0mm, width for any size. For example: Rectangle cut board 4×10mm
It is required to change the julienne board also when changing the cutting size.

DX-80 多功能切絲機 Multi julienne

小巧的切絲機
The compact thin-strip cutter.

【用途：切絲、切條、切片】
Applications : Cutting into thin strips, slices, rectangles

- 最大長度是10cm
- 可切大蔥絲（3.0mm以上）
- 豐富的選配件（切絲、切片、切條）
- 順着食材的纖維切割口感好
- Up to 10cm in length.
- It is possible to cut leeks into thin strips. (3.0mm in width or wider)
- A wide variety size of cutting options. (Thin strips, Slices, Rectangles)
- Clearly cut along with the fibers of foodstuffs.



絲 Julienne



- 附屬品/絲刀盤 ※有各種型號刀盤供選擇
- Accessory/julienne board (Standard size of 3×3mm)
- You may choose the comb blade's width size from below.

<ul style="list-style-type: none"> ■ 機器尺寸: W380×L230×H380 (mm) ■ 投入口: W80×L80×H70 (mm) ■ 額定耗電: 220V/110W 50Hz ■ 重量: 7.8kg ■ 使用時間: 30分鐘 ■ 處理能力: 3×3mm的絲 牛蒡25根/5分鐘 蘿蔔5根/5分鐘 	<ul style="list-style-type: none"> ■ Dimensions : W380×L230×H380(mm) ■ Insertion Slot : W80×L80×H70 (mm) ■ Electricity Power : 220V/110W 50Hz ■ Weight: 7.8kg ■ Operating Time: 30min ■ Processing Capacity: using 3×3mm julienne board Cut burdock 25pcs/5min Cut Japanese radishes 5pcs/5min
---	--

- 選配件
片刀盤: 0.3~2.5mm
片刀盤: 3.0、4.0mm
絲刀盤: 1.0×1.0mm、1.2×1.2mm、1.5×1.5mm、2.0×2.0mm、2.5×2.5mm、3.0×3.0mm、4.0×4.0mm
★訂做也是最大厚度4.0mm。寬度（絲刀的型號）可以自由選擇。
例）寬條: 2×7mm
※更換尺寸型號，必須要更換整個絲刀盤。1個刀盤1個型號
- Options
Slice board: 0.3~2.5mm
Slice board: 3.0mm, 4.0mm
Julienne board: 1.0×1.0mm, 1.2×1.2mm, 1.5×1.5mm, 2.0×2.0mm, 2.5×2.5mm, 3.0×3.0mm, 4.0×4.0mm
Custom-made julienne board also available. Thickness up to 4.0mm, width for any size. For example: Rectangle cut board 2×7mm
It is required to change the julienne board also when changing the cutting size.

MV-50D V型切片機 V slicer

不銹鋼手動切片機
Manual stainless steel slicer.

【用途：切片】
Applications : Slicing only

- 圓形投入口及 V 型刀片
- 難切的，較軟的食材也可以均勻切片
- 不銹鋼材質，除投入口以外都可煮沸消毒
- Circular insertion slot and V-shaped blade
- Can evenly slice the foodstuff what is hard or tender to cut.
- Stainless steel body. It is possible to sterilize all of the parts except the insertion slot.



平刀
Flat blade



- 機器尺寸: W410×L195×H250(mm)
- 投入口: φ100mm
- 重量: 3kg
- 厚度調整: 0.5~10mm自由調節
轉盤式刻度盤
- 外形: SUS 304不銹鋼
- Dimensions : W410×L195×H250(mm)
- Insertion Slot : φ100mm
- Weight : 3kg
- Thickness adjustment : 0.5~10mm (Stepless adjustment)
- Equipped with the dial scale.
- Body: Made of SUS304 stainless steel

S19D 切片 MAMA D Slice Mama D

輕鬆手動! 切絲切片更換簡單
Easy to use! Easy to change slicing and julienne board.

【用途：切絲、切片】
Applications : Slicing and julienne

- 可切絲、切片
- 整機可水洗時刻保持乾淨
- 塑料制
- Can cut into thin strip and slice.
- Very sanitary because whole washing is possible.
- Made of plastic.



- 機器尺寸: W430×L170×H210(mm)
- 投入口: W98×L98×H75(mm)
- 重量: 2kg
- 切絲尺寸: 3.0×3.0mm (只有1種)
- 厚度調整: 1~10mm自由調節
(1mm單位)轉盤式刻度盤
- Dimensions : W430×L170×H210(mm)
- Insertion Slot : W98×L98×H75(mm)
- Weight: 2kg
- Size of julienne: 3.0mm×3.0mm only
- Thickness adjustment : 1~10mm (Dial adjustment system by 1mm each)

DX-70 多功能剝絲機 Multi tsuma cutter

Peeling garnish all the way around
vegetables, making your dishes more creatively.
可切細絲、剝片及各種創新菜



得到最好設計獎
Good Design Award.

【用途：切絲、切條、切片】

Applications : garnishes, thin width slicing, meshes/option parts.

- 剝片最大寬度是 11cm
- 船裝漁網特制專用刀瞬間切出
- Can peel into max 11cm width thin slicing(Katsura-muki)
- Optional mesh maker attachment can make your dish more creatively.

● 附屬品/絲刀(標準1.2mm) ※有各種型號刀供選擇

● 選配件/漁網刀

絲刀(0.8 · 1.0 · 1.2 · 1.5 · 2.0 · 3.0 · 4.0mm 其他)
※5 · 10 · 15 · 50mm 類特殊型號可訂制

● Accessory/comb blade (Standard size of 1.2mm)

※ You may choose the comb blade's width size from below.

● Options/Mesh maker attachment

comb blade width size (0.8 · 1.0 · 1.2 · 1.5 · 2.0 · 3.0 · 4.0mm etc.)
Custom-made width size 5 · 10 · 15 · 50mm also available.

■ 機器尺寸：W380×L310×H210(mm)

■ 額定耗電：220V/110W 50Hz

■ 重量：7.6kg

■ 使用時間：20分

■ 處理能力：1.2mm的絲5根蘿蔔/5分鐘

■ 厚度1.2mm固定

(寬度可更換不同的絲刀型號來改變)

■ Dimensions : W380×L310×H210(mm)

■ Electricity Power : 220V/110W 50Hz

■ Weight: 7.6kg

■ Operating Time: 20min

■ Processing capacity: Using 1.2mm size cut

Japanese radish's garnish 5pcs/5min

■ Adjustment of thickness: Fixed at 0.7mm
(Possible for choosing the comb blade's
width size you like.)



創新料理的最好幫手

A reliable supporter of creative dishes



〈蔬菜麵〉Vegetable pasta

可制作蘿蔔、胡蘿蔔、南瓜、黃瓜、紅薯、馬鈴薯等五顏六色的蔬菜長條。可制作蔬菜麵、特色沙律、將各種顏色及創意放到料理裏，開發出無與倫比的新菜單。

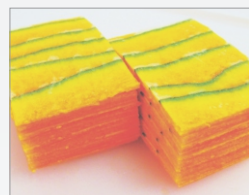
Cut into colorful and unique Japanese radishes, carrots, pumpkins, cucumbers, sweet potatoes, potatoes' garnishes and thin width slicing, You can realize various ideas for creative dishes, such as making vegetable pasta and salad arrangements.



〈蔬菜花〉Vegetable flowers

用 0.7mm 的均勻切片，將長長的蘿蔔、胡蘿蔔、南瓜、黃瓜的長條片疊在一起，用絲刀劃上絲，卷起來綁成圓柱，打開劃絲的部分，美麗的蔬菜花就完成了。制作一個特別的醃菜或前菜如何？

Layer of each amazingly even thinness of 0.7mm long-thin Japanese radish, carrot and cucumber, then slit them with comb blade and roll them up. Open the slits of what is rolled up, beautiful flowers are completed. Decorate this pickles or appetizer flower in your dishes.



〈南瓜剝片〉
Pumpkin's width-thin slicing

隨心所欲剝出手工很難完成的南瓜長條片。將剝好的胡蘿蔔片類呈疊後切斷，或蒸，或炒或與奶酪一起享用。利用五顏六色的色彩開發出創作料理無與倫比的的新菜單。

Peeling pumpkin's width-thin slicing which is difficult by hand. You can arrange it you like to put width-thin slicing carrots on top of peeled pumpkins layer, than to steam or roast and top with cheese. By using beautiful color cook unique and new creative dishes.

DX-100 多用途切片機 Multi slicer

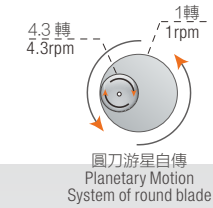
Easy to cut soft thin strips of cabbage like a Tonkatsu
(Japanese style fried pork) restaurant chef done.

炸豬排店裏的鬆軟卷心菜絲瞬間完成!

【用途：卷心菜切絲、其他食材的切片】

Applications: cutting cabbage into julienne,
slicing any vegetables into slice

- 圓刀的超高速游星自傳(1分鐘 2150 轉)，令人吃驚的高速處理。
- 柔軟的春季卷心菜和生菜也能輕鬆切割。
- 結構簡單，易於清潔，維修簡單
- Ultra-high speed planetary motion of round blade (2150rpm/1min) amazingly process in speedy.
- Even soft spring cabbages and lettuces are easily cutting.
- Easy cleaning and maintenance by the simple structure.



圓刀游星自傳
Planetary Motion
System of round blade

● 附屬品/圓刀磨刀器

■ 機器尺寸：W340×L430×H510 (mm)

■ 投入口：φ70、φ200 (變形半月型)

■ 額定耗電：220V/220W 50Hz

■ 重量：10kg

■ 使用時間：30分鐘

■ 處理能力：1mm厚度切絲，卷心菜5個/5分鐘

■ 厚度調整：0.3~5.0mm

(用轉盤上的三個螺絲進行無等級調節)

※使用推子之前將食材推入

● Accessory/round blade sharpener

■ Dimensions: W340×L430×H510(mm)

■ Insertion Slot: φ70, φ200 (Deformed semicircular)

■ Electricity Power: 220V/220W 50Hz

■ Weight: 10kg

■ Operating Time: 30min

■ Processing capacity: Cut cabbages into 1mm thin strip

5pcs/5min

■ Thickness adjustment: 0.3-5.0mm
(Stepless adjustment by three screws of the turning disk.)



DX-150 卷心菜切絲機 Caberobo

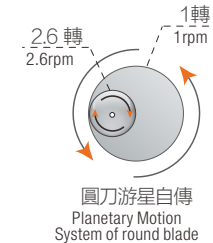
Just cut the cabbage into half and put inside only!
Thin strips of cabbages are made automatically.

【用途：卷心菜切絲】

Applications : Cutting cabbage into thin strips.

只需將卷心菜切成兩半投入，之後任意切絲

- 採用圓刀游星自轉方式，可無阻礙且美觀均勻切片
- 鬆軟，口感好的卷心菜切絲瞬間完成
- 利用卷心菜的重量自己切割。操作人員可以做別的事情。



圓刀游星自傳
Planetary Motion
System of round blade

- By using Planetary Motion System of round blade, cabbage can be sliced cleanly and evenly with no pressure.
- Easy to cut soft thin strips of cabbage with nice texture.
- You can do other works during cabbages be cut by it's self-weight.

■ 機器尺寸：W393xL408xH486(mm)

■ 投入口：φ280xH170(mm)

■ 額定耗電：220V/220W 50Hz

■ 重量：15kg

■ 使用時間：30分鐘

■ 處理能力：0.8mm厚度切絲，卷心菜3個/5分鐘

■ 厚度調整：0.8~4.0mm

※卷心菜切絲專用

■ Dimensions : W393xL408xH486(mm)

■ Insertion Slot : φ280xH170(mm)

■ Electricity Power : 220V/220W 50Hz

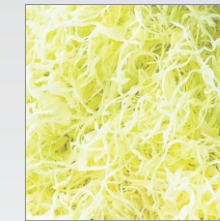
■ Weight: 15kg

■ Operating Time: 30min

■ Processing Capacity:

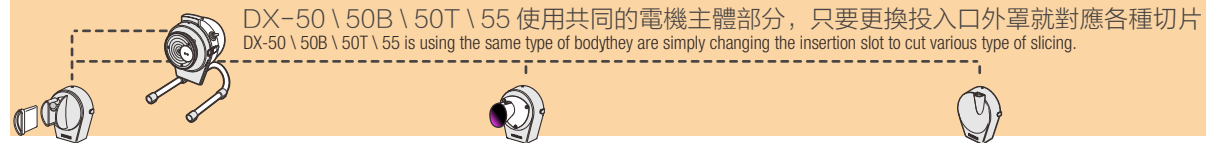
· Cut cabbages into 0.8mm thin strip 3pcs/5min

· Thickness adjustment: 0.8-4.0mm for cutting cabbage into thin strip use only



卷心菜切絲
Thin strips of
cabbages





DX-50 \ 50B \ 50T \ 55 使用共同的電機主體部分，只要更換投入口外罩就對應各種切片
DX-50 \ 50B \ 50T \ 55 is using the same type of body they are simply changing the insertion slot to cut various type of slicing.

DX-50 迷你多功能切片機 Multi slicer mini

【用途：長蔥切片】
Applications: Cutting into thin strips, slices, rectangles

- 圓刀的高速游星自傳(1分鐘 6000轉),令人吃驚的高速處理。外觀小巧,清潔和維修都很簡單
- Ultra-high speed planetary motion of round blade (6000rpm/1min) amazingly process in speedy.
- Easy cleaning and maintenance from the compact design

- 選配件 斜切片專用外罩 (長蔥用)
喇叭式投入口外罩 (小蔥用)
- Options
Shaving cut cover (for cutting leeks/long green onions into diagonal)
Trumpet-type insertion cover (for cutting spring onions)
- 附屬品/圓刀磨刀器 Accessory/round blade sharpener

長蔥是這樣切成圓片的!
This model is completely suited to cut leeks into ring cutting!

- 機器尺寸: W220×L340×H370 (mm)
- 投入口: 95×38 (mm) (變型月牙型)
- 額定耗電: 220V/110W 50Hz
- 重量: 5kg
- 使用時間: 20分
- 處理能力: 1.0mm的厚度長蔥30根/5分鐘
- 厚度調整: 0.3~5.0mm (無等級)

- Dimensions: W220×L340×H370(mm)
- Insertion Slot: 95×38(mm) (Deformed semicircular)
- Electricity Power: 220V/110W 50Hz
- Weight: 5kg
- Operating Time: 20min
- Processing capacity: Cut leeks/long green onions into 1mm ring cutting 30pcs/5min
- Thickness adjustment: 0.3~5.0mm (Stepless adjustment)



長蔥
Leeks/Long green onions

DX-50B 迷你小蔥切片機 (喇叭投入口) Multi slicer mini (Trumpet-type insertion slot)

【用途：小蔥切片】
Applications: cutting spring onions into ring

- 非常適合小蔥的散葉狀喇叭投入口
拿住小蔥的根部投入
- This trumpet-type insertion slot which is suited to spring onions. Insert spring onions by grabbing the part near their roots. Applicable to Kujō green onions.

- 選配件 Options 斜切片專用外罩 (長蔥用)
大蔥切圓片專用外罩 (長蔥用)
- Options
Shaving cut cover (for cutting leeks/long green onions into diagonal)
Ring cutting cover (for cutting leeks/long green onions)
- 附屬品/圓刀磨刀器 Accessory/round blade sharpener

柔軟的小蔥也可輕鬆切片
Tender spring onions can be cut easily.

- 機器尺寸: W220×L330×H370 (mm)
- 投入口: φ85~φ45 (喇叭型)
- 額定耗電: 220V/110W 50Hz
- 重量: 5kg
- 使用時間: 20分鐘
- 處理能力: 4mm的厚度長蔥15根/5分鐘
- 厚度調整: 0.3~5.0mm (無等級)

- Dimensions: W220×L330×H370 (mm)
- Insertion Slot: φ85~φ45 (Trumpet-type)
- Electricity Power: 220V/110W 50Hz
- Weight: 5kg
- Operating Time: 20min
- Processing capacity: Cut spring onions into 4mm ring cutting 15bundle/5min
- Thickness adjustment: 0.3~5.0mm (Stepless adjustment)



小蔥 Spring onions

DX-55 迷你削切、斜切機 Sasagaki Slicer Mini

【用途：牛蒡的斜切削切、長蔥的斜切片】
Applications: shaving burdock roots, slicing leeks diagonally

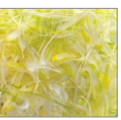
- 適用於蔥拉面裏的斜切長蔥
- 採用圓刀游星自轉方式,從前端開始切片的方式
- Suited for Japanese-ramen (Chinese noodles) topped with sliced leeks. Using ultra-high speed planetary motion system of round blade and bottom to top cutting system

- 選配件 喇叭投入口專用外罩 (小蔥用)
大蔥切圓片專用外罩 (長蔥用)
- 附屬品 / 圓刀磨刀器
- Options
Trumpet-type insertion cover (for cutting spring onions)
Ring cutting cover (for cutting leeks/long green onions)
- Accessory/round blade sharpener

牛蒡的斜切削切、大蔥的斜切片
Shaving burdock roots, slicing leeks diagonally.

- 機器尺寸: W220×L310×H370 (mm)
- 投入口: φ32 (漸變)
- 額定耗電: 220V/110W 50Hz
- 重量: 5kg
- 使用時間: 20分鐘
- 處理能力: 1.0mm的厚度長蔥斜切35根/5分鐘
牛蒡的削切12根/5分鐘*必須用手轉動牛蒡
- 厚度調整: 0.3~5.0mm (無等級)
*長度約3~5cm
(根據食材的粗度不同切出的長度也不同)

- Dimensions: W220×L310×H370 (mm)
- Insertion Slot: φ32 (Deformed)
- Electricity Power: 220V/110W 50Hz
- Weight: 5kg
- Operating Time: 20min
- Processing capacity: Cut leeks/long green onions into diagonal 35pcs/5min Shaving burdock roots 12pcs/5min It is necessary to rotate burdock roots manually. Thickness adjustment: 0.3~5.0mm (Stepless adjustment) Length of shaving size is around 3~5cm (Length of shaving size will be difference depend on the foodstuff.)



長蔥的斜片
Diagonally sliced leeks



牛蒡的削切
Shaved burdock roots

DX-50T 小辣椒切片機 Chili cutter

各種大小的小辣椒快速切片
Speedy cut various sizes of chillies!



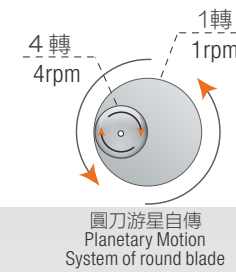
小辣椒

【用途：小辣椒切片】
Application: slicing chillies into ring cutting

- 有四個不同入口可對應大小不一的小辣椒都可切
- 蔥絲和葉子的細絲都可切
- Equipped with 3 sizes of insertion slot for cutting various kind of chillies easily.
- Available to shred leeks and lemon leaf into fine strips.

- 選配件 喇叭投入口專用外罩 (小蔥用)
大蔥切圓片專用外罩 (長蔥用)
斜切片專用外罩 (長蔥用)
- 附屬品/圓刀磨刀器
- Options
Trumpet-type insertion cover (for cutting spring onions)
Ring cutting cover (for cutting leeks/long green onions)
Shaving cut cover (for cutting leeks/long green onions into diagonal)
- Accessory/round blade sharpener

- 機器尺寸: W220×L310×H370(mm)
- 額定耗電: 220V/110W 50Hz
- 重量: 5kg
- 使用時間: 20分鐘
- 厚度調整: 0.3~5.0mm (無等級)
- Dimensions: W220×L310×H370 (mm)
- Electricity Power: 220V/110W 50Hz
- Weight: 5kg
- Operating Time: 20min
- Thickness adjustment: 0.3~5.0mm (Stepless adjustment)



圓刀游星自傳
Planetary Motion
System of round blade



DX-10BT 水流循環 迷你圓刀磨刀機 Water flow cycling round blade sharpener mini

Not only for sharpening round blade and also for knives. Economical!

【用途：圓刀 刀具研磨】
Applications: round blade, knives sharpening

- DREMAX 附帶圓刀磨刀器磨不好的時候!
為大量加工,刀鋒消磨很快時!

- For those who are not satisfied with the finish of round blade sharpener pendant in DREMAX products!
- For those who are bothered by blades that become dull soon due to cut large amount of foodstuffs!

- 附屬品/砂石#1200 (精磨砂石)
- 選配件/粗砂石 (#80/100) 中砂石 (#120)
- Accessory/Grindstone #1200 (Grindstone for finishing)
- Options/Coarse grindstone (#80/100) Medium grindstone (#120)

- 機器尺寸: W250×L230×H365(mm)
- 額定耗電: 220V/110W 50Hz
- 重量: 5kg
- 使用時間: 60分鐘
- 砂石: 外圍φ125 內圍φ70
- 對應機種: DX-50, DX-50M, DX-100
- Dimensions: W250×L230×H365 (mm)
- Electricity Power: 220V/110W 50Hz
- Weight: 5kg
- Operating Time: 60min
- Grindstone: Exterior φ125, Interior φ70 Available to round blade of model DX-50 series, DX-50M, DX-100, DX-1000, DX-150

圓刀, 菜刀, 一臺機器全部能磨, 經濟實惠



DX-90 多功能斬碎機

Multi mince

【用途：碎末切碎】

Applications:High speed chopping performance

- 小巧圓盤式切碎機
- 塑料圓盤裝卸簡單

- Compact vegetable bowl-cutter.
- Using ABS-plastic bowl, easy for handling and cleaning.

- 機器尺寸: W580×L390×H240 (mm)
- 額定耗電: 220/220W 50Hz
- 重量: 15kg
- 使用時間: 20分鐘
- 處理能力: 切碎約3mm
20個圓白菜/5分鐘
35個洋蔥/5分鐘
- 圓盆容量: 4L (直徑370mm)
※洋蔥每次的切碎量: 2~3kg



Can blend with mincemeat, fish together to make hamburger or dumplings ingredients in easily.

- Dimensions :W580×L390×H240 (mm)
- Electricity Power: 220V/220W 50Hz
- Weight: 15kg
- Operating Time: 20min
- Processing Capacity: mince into size±3mm for cabbage 20pcs/5min for onion 35pcs/5min
Bowl size: 4L (diameter φ 370mm)
※can fill 2~3kg of onions in once.

Could mince vegetables how fine you like!
Chopped vegetables will not become watery!
粗細大小自由選擇, 不出水分!



DX-50M 碎蔥美人

Naganegi onion mince

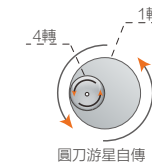
For chopping green onions beautifully and finely all at once...

祇一次就切出 嘩嘩啦啦漂亮的蔥碎

【用途：長蔥切碎】

Applications:High speed chopping performance for green onion

- 一次投入推進去, 出來的就是 3 ~ 4mm 方丁蔥碎!
- 適用於中餐、西餐、烤肉、拉麵裏的蔥碎
- For chopping green onions beautifully and finely into ±3-4mm dice all at once...
- Best for cooking in Chinese foods, Western foods, Ramen noodles etc.



長蔥切碎
Mince for long green onions

- 附屬品/ 圓刀磨刀器、推子
- 選配件/ 絲刀盤(3mm,4mm)
- Accessories / Round blade sharpener and pusher are included.
- Options / Turning disk with comb blade (3mm,4mm) for your choice.

- 機器尺寸: W220×L340×H370 (mm)
- 投入口: 95×38 (mm) (半月形)
- 額定耗電: 220V/110W 50Hz
- 重量: 5kg
- 使用時間: 20分
- 處理能力: 長蔥35根/5分鐘
- 厚度3mm固定
- ※與DX-50·55·50B 不能互換

- Dimensions: W220×L340×H370 (mm)
- Insertion Slot:95×38(mm) deformed semi-lunar shape
- Electricity Power: 220V/110W 50Hz
- Weight:5kg
- Operating Time:20min
- Processing Capacity:Chopping 35long green onions finely around 5min.
- Adjustment of thickness:Fixed at 3mm
- ※ This model is not compatible with DX-55·55·50B



DX-40 垂直投入切碎機

Vertical mince

【用途：碎末切碎】

Applications:High speed chopping performance

- 附帶2種粗度調節板
- 粗(5孔)約4~6mm、細(3孔)約2~4mm
- Two fineness adjustment boards are included.
- 5holes for mince into ±4-6mm coarse and 3holes for mince into ±2-4mm fines adjustment board for your choice.

- 附屬品/粗度調節板(5孔、3孔)
- Accessories/Fineness adjustment board 5holes and 3holes are included.

- 機器尺寸: W200×L260×H410 (mm)
- 投入口: φ110
- 額定耗電: 220V/110W 50Hz
- 重量: 5kg
- 使用時間: 20分鐘
- 處理能力: 碎末切碎(3孔使用時)
12個圓白菜/5分鐘
32個洋蔥/5分鐘

- Dimensions: W200×L260×H410 (mm)
- Insertion Slot: φ110
- Electricity Power: 220V/110W 50Hz
- Weight: 5kg
- Operating Time: 20min
- Processing Capacity: mince by 3holes adjustment board for cabbage 12pcs/5min for onion 32pcs/5min

Just put the foodstuffs in from top and mince. Easily and Fast!
祇需由上面投入 就可輕鬆切碎



圓白菜
The cabbage



※ 想要切得更小時可以再次投入 *When you want to chop foodstuffs more finely, throw them in the machine twice.

NK-100D 高速剝絲機

High speed tsuma cutter

A whole Japanese radish quickly turns to full of garnishes.

一根蘿蔔全部溢出!

【用途：蘿蔔、胡蘿蔔切絲】

Applications:Garnishes of Japanese radishes and carrots

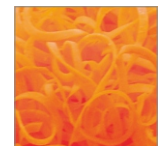
- 只需切掉蘿蔔的兩端並固定
- 自帶強制自動輸送裝置高性能剝絲機
- Just remove both end of Japanese radish and set it in simply only.
- The fully automatic high-performance cutter for garnishes with forced feeder.

- 附屬品/ 絲刀(標準1.2mm)
- ※ 有各種型號刀供選擇
- 選配件/ 絲刀(0.8·1.0·1.2·1.5·2.0mm等)

- Accessories/with comb blade size 1.2mm.
- ※ You may choose the comb blade's width size from below.
- Options/Comb blade width size(0.8·1.0·1.2·1.5·2.0mm etc.)

- 機器尺寸: W650×L250×H340 (mm)
- 額定耗電: 220V/155W 50Hz
- 重量: 15kg
- 使用時間: 30分鐘
- 處理能力: 1.2mm的絲8根蘿蔔/5分鐘
- 厚度1.2mm固定
- (寬度可更換不同的絲刀型號來改變)

- Dimensions: W650×L250×H340 (mm)
- Electricity Power: 220V/100W 50Hz
- Weight: 15kg
- Operating Time: 30min
- Processing Capacity: cut into 1.2mm width size of Japanese radish 8pcs/5min
- Adjustment of thickness: Fixed at 1.2mm (Possible for choosing the comb blade's width size you like.)



使用較寬絲刀切割 for example:using a wide size comb blade to cut carrots.